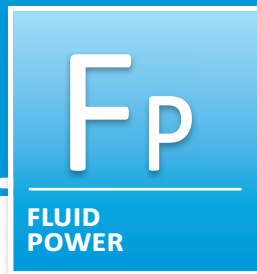
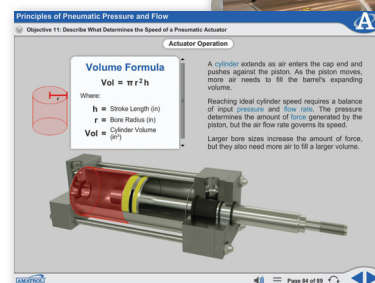
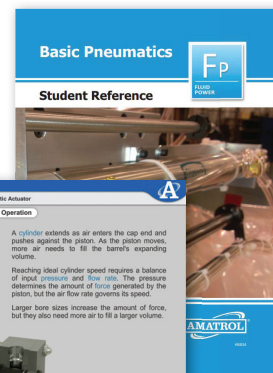


# Basic Pneumatics Learning System – Double Sided A-Frame Bench

850-PD1



850-PD1 with Optional Intermediate Pneumatics (85-IP) & Additional Basic Pneumatics (85-BP) Systems



Interactive Multimedia Curriculum and Student Reference Guide

## Learning Topics:

- Pneumatic Power Systems
- Circuit Connections
- Basic Pneumatic Circuits
- Pneumatic Schematics
- Principles of Pneumatic Pressure and Flow
- Pneumatic Leverage
- Pneumatic Speed Control Circuits
- Air Flow and Resistance
- Air Flow Control and Measurement
- Flow Control Valves

Amatrol's Basic Pneumatics Learning System – Double Sided A-Frame Bench (850-PD1) features the Basic Pneumatics Learning System (85-BP) panels mounted on a sturdy, durable A-frame bench with plenty of room for expansion. For example, users can add another set of Basic Pneumatics panels to the opposite side of the bench to double training capacity, or more advanced pneumatic concepts can be taught by adding Intermediate Pneumatics (85-IP), Advanced Pneumatics (85-AP), or Electro-Pneumatics (85-EP) systems.

The 850-PD1 teaches learners basic pneumatic concepts and skills, such as pneumatic leverage; air flow control and measurement; and how to operate, install, design, and troubleshoot basic pneumatic circuits for various applications. The system features standard industrial-grade components that give learners real-world experience with equipment they'll encounter on the job. This combination of basic pneumatic knowledge and practice with hands-on equipment helps learners build the pneumatic skills they will need to succeed in the workplace.



## Technical Data

Complete technical specifications available upon request.

### A-Frame Double Sided Controls Technology Bench

#### Basic Pneumatics Actuator/Valve Module

- Air Motor
- Spring Return Cylinder
- Cylinder, 1 1/8"
- Cylinder, 1 1/2"
- Flow Control
- Lever-Operated Control
- Rail Assembly, 10"
- Rail Assembly, 11"

#### Basic Pneumatics Instrument Panel

- Pressure Gauge
- Filter Regulator
- Rotameter
- Manometer

#### Pneumatic Hose and Fittings Package (85-PHF)

- Hose, 42"
- Hoses, 36" (2)
- Hoses, 24" (4)
- Hoses, 16" (4)
- Hoses, 12" (2)
- Basic Pneumatics Coiled Hose
- Cross
- Tees (2)

#### Multimedia Curriculum (MB834)

#### Instructor's Guide (CB834)

#### Installation Guide (DB834)

#### Student Reference Guide (HB834)

#### Additional Requirements:

- Computer (Visit [www.amatrol.com/support](http://www.amatrol.com/support) for computer requirements for details.)

#### Utilities Required:

- Pneumatic Power Supply or Conditioned (Dry and Filtered) Shop Air

#### Options:

- Basic Pneumatics (85-BP)
- Intermediate Pneumatics (85-IP)
- Advanced Pneumatics (85-AP)
- Electro-Pneumatics (85-EP)

## Study Basic Pneumatic Concepts and Practice on Real-World Equipment

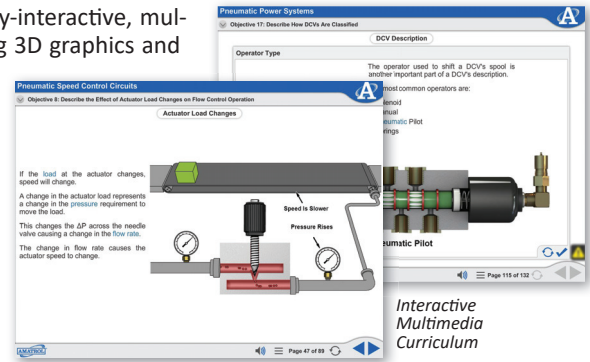
The 850-PD1 curriculum covers a wide variety of basic pneumatic concepts and topics, including pneumatic power, single-acting cylinder and basic motor circuits, air pressure, cylinder force, schematics, air flow control and measurement, and speed control. Learners will also gain valuable real-world experience with industrial-quality equipment, such as pneumatic cylinders, flow controls, directional control valves, air motors, pressure gauges, rotameters, manometers, and air filters.



Basic Pneumatics (85-BP)

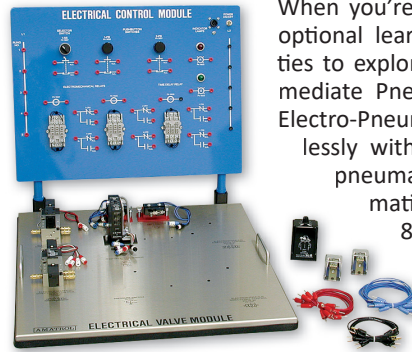
## Engaging, Highly-Interactive Multimedia

Amatrol's curriculum features a highly-interactive, multimedia format that includes stunning 3D graphics and videos, voiceovers of all text, and interactive quizzes and exercises designed to appeal to learners with different learning styles. The combination of theoretical knowledge and hands-on skills solidifies understanding and creates a strong basis for pursuing more advanced skills.



## Expand Your System for Additional Learning Opportunities

When you're ready to go beyond basic pneumatics, you can add optional learning systems to the 850-PD1 to extend its capabilities to explore more advanced pneumatic concepts, such as Intermediate Pneumatics (85-IP), Advanced Pneumatics (85-AP), and Electro-Pneumatics (85-EP). These optional systems integrate seamlessly with the 850-PD1 and teach intermediate to advanced pneumatic concepts, including electrical relay control of pneumatic systems. To maximize the training capabilities of the 850-PD1, you can also add additional Basic Pneumatics (85-BP) panels to the one included with the system.



Optional Electro-Pneumatics (85-EP)

## Student Reference Guide

A sample copy of the Basic Pneumatics Student Reference Guide is also included with the system for your evaluation. Sourced from the system's curriculum, the Student Reference Guide takes the entire series' technical content contained in the learning objectives and combines them into one perfectly-bound book. Student Reference Guides supplement this course by providing a condensed, inexpensive reference tool that learners will find invaluable once they finish their training, making it the perfect course takeaway.

