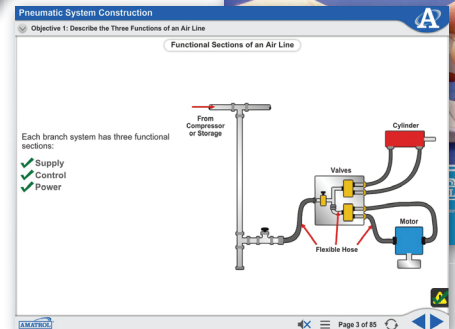
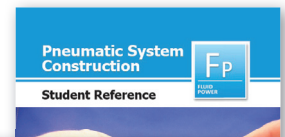


# Pneumatic Construction Learning System

94-PFC-1



94-PFC-1



Interactive Multimedia Curriculum and Student Reference Guide

## Learning Topics:

- Air Supply Connections
- Air Line Functions
- Pneumatic Fitting Threads
- Specify Pipe Size
- Control Air Connections
- Reducing Bushings
- Flexible Tubing
- Pneumatic Tubing Fittings
- Power Air Connections
- Bulkhead Fitting

Amatrol's Pneumatic Fitting Construction Learning System (94-PFC-1) covers how to select the proper fittings required for connecting components and installing fittings to hoses and flexible tubing. Major topics covered by the Pneumatic Fittings training system include air supply connections, control air connections, and power air connections. The topics and pneumatic skills included in this system are required knowledge for any technician or engineer involved in the construction of pneumatic systems.

The Pneumatic Fittings training system includes a tabletop workstation with pre-mounted pneumatic components like a pneumatic cylinder, flow control valve, manifold, and directional control valve. Learners will use these and other components to practice skills like installing a rubber hose onto a push-on type fitting, connecting tubing using a ferrule type fitting, and installing a bulkhead fitting. Working with these industrial-grade components will help learners gain confidence and build real-world applicable skills for rewarding careers like industrial maintenance technicians.



## Technical Data

Complete technical specifications available upon request.

### Construction Panel

Manifold  
Pneumatic Cylinder, 15mm Bore, 2-in. Stroke  
Bracket for Flow Control Valve  
Flow Control Valve  
Directional Control Valve, 3-position, 4-way,  
Plastic Toggle

### Tubing Set

14-Gallon Heavy-Duty Tote Box  
30-ft. Rubber Air Hose  
25-ft. Polyurethane Tubing  
25-ft. Large Nylon Tubing  
15-ft. Small Nylon Tubing

### Fittings and Component Sets

Teflon Tape  
Quick Connect Coupler, Male and Female  
Nipples, Unions, Tees, and Reducer Bushings  
Compression Type Fittings  
Push-on Type Fittings  
Bulkhead Fittings  
Elbows, Hose Banks, Gasket Plugs

### Interactive Multimedia Curriculum (MB894)

#### B895 Instructor's Guide (B895)

#### Student Reference Guide (HB894)

#### Additional Requirements:

Consumable Package (11474)

#### Utilities:

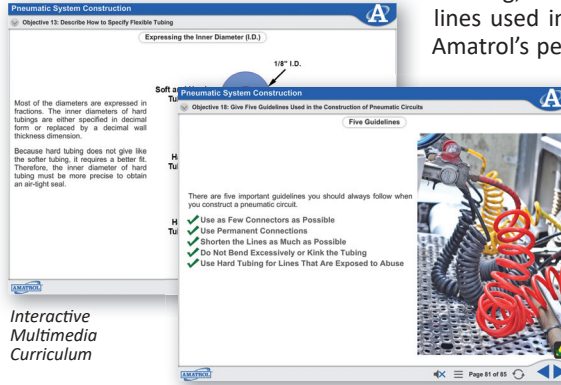
Compressed Air Supply

## Use Real-World Components to Build Pneumatic Fitting Installation Competency

Learners will use the components on the workstation, as well as tubing, hoses, Teflon tape, quick connects, tees, and bulkhead fittings, to practice real-world pneumatic skills. These components will be used to install seal tapered pipe fittings using Teflon tape, install a reducing bushing to connect an oversized port, and install and replace a directional-control valve on its subplate.

## Interactive Multimedia Curriculum Covering Control Air, Power Air, and Air Supply Connections

The Pneumatic Fitting interactive multimedia curriculum covers a variety of industry-relevant topics like the operation of dryseal tapered pipe threads, how to specify the size of a reducing bushing, how to specify flexible tubing, and guidelines used in the construction of pneumatic circuits. Amatrol's peerless interactive multimedia curriculum utilizes text with voiceovers, pictures, videos, stunning 3D animations, and interactive quizzes and reviews that engage learners in theoretical knowledge and concepts.



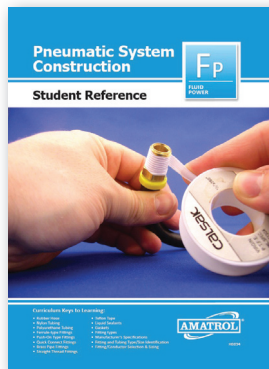
Interactive  
Multimedia  
Curriculum

## Additional Amatrol Pneumatics Systems

In addition to Pneumatic Fittings, Amatrol also offers pneumatic learning systems as the basic (85-BP), intermediate (85-IP), and advanced levels (85-AP), as well as basic pneumatic troubleshooting (990-PTB1) and advanced pneumatic troubleshooting (950-PT1).



Basic Pneumatic Troubleshooting  
(990-PTB1)



## Student Reference Guide

A sample copy of the Pneumatic Fitting Construction Student Reference Guide is included with the learning system. Sourced from the curriculum, the Student Reference Guide takes the entire series' technical content contained in the learning objectives and combines them into one perfectly-bound book. If you would like to inquire about purchasing additional Student Reference Guides for your program, contact your local Amatrol Representative for more information.

