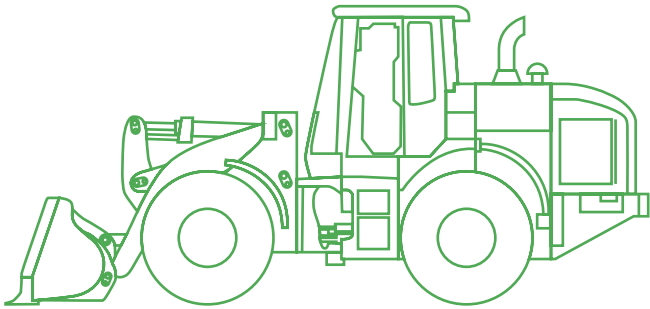


Wheel Loader Training Pack



Simulated Equipment Specs

Rated net power: 105 kW (140 HP)	Bucket capacity: 2.3 m ³ (3.0 yd ³)
Operating weight: 13,200 kg (29,101 lbs)	Transmission: 4-speed, all-wheel drive

Overview /

The Vortex[®] Wheel Loader Training Pack is part of the Vortex construction equipment training product suite. From earth moving and stockpile management to truck loading, operators who train with Vortex simulators develop the skills, coordination, and worksite awareness they need to master safe, efficient operations.

Key features & benefits /

The Wheel Loader Training Pack integrates guided learning features in the form of real-time feedback during exercises, on crucial metrics such as distance from objects, traction, and terrain height. It also integrates the industry's only real-time Grade Quality Sensor (GQS). The GQS tracks key metrics such as height, slope and standard deviation.

This feedback allows trainees to make the adjustments needed in order to advance their learning more quickly, and ultimately develop positive habits that will carry over to the real equipment.

A progressive learning program

covering basic to advanced skills ranging from control familiarisation and excavating, to working with stockpiles and truck loading.

Performance metrics and reporting

that provides students with the feedback on their operating and earth moving skills.

Best-of-class loader and earthmoving simulation

that ensures real skills development and behaves like the real machine.



Wheel loader and earth-moving simulation

The Wheel Loader Training Pack incorporates the most advanced soil simulation available on the market. This results in highly realistic dirt moving, which is critical for training operators how to position the bucket properly and understand the machine's capacity.

Thanks to this accurate soil simulation, the Wheel Loader Training Pack can teach trainees advanced earthmoving techniques while focusing on efficiency and safety. For example, they can learn how to ensure that the dump truck's driving path is even and clear of any obstacles that might cause it to tip.

The training pack immerse trainees in a challenging environment that encourages them to change tools depending on the task they need to accomplish. This means trainees must learn the proper usage of the quick coupler. This is a critical component of training, as it teaches them to avoid accidental release of the bucket during operations, which can cause life-changing situations on the worksite.

The Wheel Loader Training Pack incorporates Smart Training Technology™, resulting in a training tool that delivers the most transferable skills anywhere, outside of the real equipment.



Supported Vortex Hardware Platforms

The Vortex Wheel Loader Training Pack can be installed on any Vortex simulator hardware platform, with different configurations to meet your budget, space, and training requirements. Vortex simulators are built to last, designed for years of 24/7 operator training.

Vortex Edge laptop-based instructional platform

Vortex Edge Plus portable single display trainer

Vortex Advantage with one, three, or five immersive displays

Learning program

The Wheel Loader Training Pack features progressive learning exercises—from beginner to advanced—designed to gradually build student skill and confidence:

- ✓ Understanding the controls and vehicle positioning
- ✓ Bucket positioning
- ✓ Earth moving and transport
- ✓ Stockpile management
- ✓ Excavation
- ✓ Truck loading
- ✓ Using the quick coupler
- ✓ Safe load handling

Performance measurement

The Wheel Loader Training Pack gives trainers objective insight into student performance and abilities. Trainers can measure key student performance metrics such as:

- ✓ Tasks completed and time
 - ✓ Collisions
 - ✓ Bucket capacity
 - ✓ Cycle time
 - ✓ Fuel consumption, cycle time, and Idle time
- ... and more

The optional Instructor Operation Station allows instructors to generate reports from wheel loader training sessions, and review current and past performance.



645 Wellington Street,
Suite 301
Montreal, Quebec,
Canada H3C 1T2

info@cm-labs.com
cm-labs.com
T +1 514 287 1166

@vxsim
youtube.com/vortexsim